

Merlin Messenger

Parent Newsletter - October





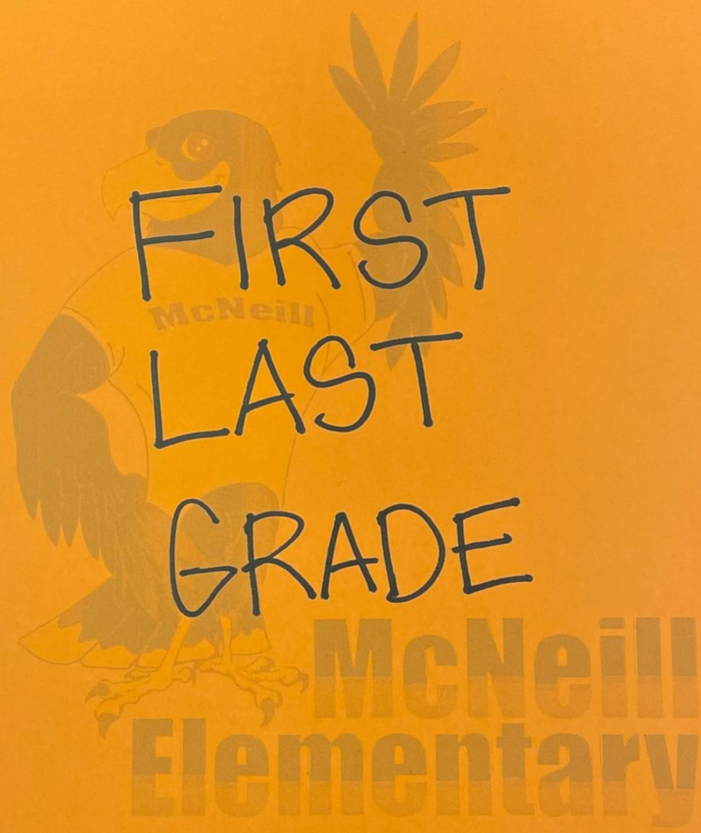
It's Fall, Y'all!

We are so excited about the cooler weather headed our way! However, since we live in Texas, we also know it is not uncommon to experience a rise and fall in temperature within the same day in addition to unexpected rain showers.

With this said, we know our Merlins will start wearing their light jackets, hoodies and coats. Our lost and found area usually starts getting packed with lost items around this time of year. Please help us out by writing your child's name on the labels so we can return any items to them that we might find. Additionally, please remember that students have recess daily and PE at least 2 times a week. To keep our students safe, it is important that they wear appropriate shoes daily.

CAR RIDER DISMISSAL - IMPORTANT

To ensure the safety and security of all students, parents **MUST** display the **ORANGE car rider tag** for **EACH child** that they are picking up daily. If you do not have an orange tag displayed you will be redirected to the front office to show your ID and to obtain a new tag. If you are in need of a replacement tag, please stop by our front office prior to dismissal to receive one. We appreciate your understanding and cooperation as student safety is our top priority.



FIRST
LAST
GRADE

McNeill
Elementary



FALL HOLIDIAAY

OCTOBER 11 & 14

NO SCHOOL FOR STAFF & STUDENTS



MCNEILL ELEMENTARY



LET'S DANCE

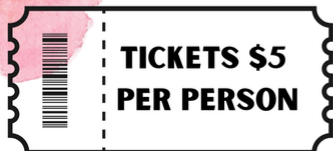
OCTOBER

18TH Friday 6:00 - 8:00 PM

PICTURES, DJ, FOOD, & FUN

Food & Drinks will be sold

Pictures available for purchase



MCNEILL ELEMENTARY GYM

All grades are welcome!

CHARACTER COUNTS WEEK AT MCNEILL ELEMENTARY



MONDAY

"HAVING CHARACTER
TAKES HEART"
WEAR RED FOR
CARING

OCT.21-25



TUESDAY

"BEING TRUE BECAUSE WE
RESPECT YOU"
WEAR BLUE FOR
TRUSTWORTHINESS OR YELLOW
FOR RESPECT

FRIDAY

"PAINT THE WORLD WITH
CHARACTER"

PK/K - BLUE FOR TRUSTWORTHINESS.
1ST GRADE - YELLOW FOR RESPECT.
2ND GRADE - GREEN FOR
RESPONSIBILITY.
3RD GRADE - ORANGE FOR FAIRNESS.
4TH GRADE - RED FOR CARING.
5TH GRADE - PURPLE FOR
CITIZENSHIP.



WEDNESDAY

"OUR AWESOME CHARACTER WILL LEAVE
YOU GREEN WITH ENVY"
WEAR GREEN FOR RESPONSIBILITY



THURSDAY

"WE ARE THE BEST CITIZENS AT
MCNEIL ELEMENTARY"
WEAR PURPLE FOR CITIZENSHIP



EARLY RELEASE

October 25th

STUDENTS WILL BE DISMISSED AT 11:45 AM



RED RIBBON WEEK

OCTOBER 28-Nov. 1



**Monday
October 28th**

Red Out



**Wear red to show
your pledge to be
drug free**



**Tuesday
October 29**

**Lei off
drugs**



**Wear a Hawaiian
shirt and/or lei**



**Wednesday
October 30**

**Follow your
dreams,
not drugs**



**Wear your
pajamas**



**Thursday
October 31st**

**Live like
your
favorite
character**



**Dress like a
children's book
character**



**Friday
Nov. 1st**

**Shade out
drugs**



Wear sunglasses

Red Ribbon Week is celebrated to bring awareness of the dangers of alcohol, drug, vaping, and tobacco use.

BOOK CHARACTER DRESS UP DAY

STUDENTS AND STAFF COME DRESSED AS YOUR FAVORITE BOOK CHARACTER!

PLEASE REMEMBER:

1. Please bring the book that goes with your costume.



2. Please no toy weapons of any kind.



3. Please no scary costumes.



YOUR CHILD SHOULD HAVE A CHANGE OF SHOES FOR RECESS AND/OR PE.

WHEN: OCTOBER 31, 2024

McNeill PTO Online Store

YOUR ONE STOP PTO SHOP



PTO MEMBERSHIP DUES

FALL MEMBERSHIP DRIVE GOING ON NOW

BIRTHDAY MARQUEE

ADVANCED NOTICE REQUIRED

DRESS DOWN DAYS

PREPAY OPTION AVAILABLE

YEARBOOK

EARLY BIRD PRICING ENDS 10/25/24

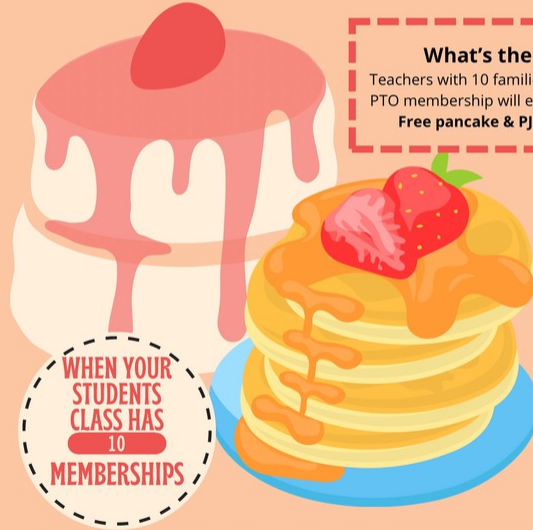


MCNEILL ELEMENTRY PTO

MEMBERSHIP DRIVE!

Pancake Time

HELP YOUR TEACHER WIN A PANCAKE & PJ CELEBRATION FOR YOUR CLASS!



What's the deal?

Teachers with 10 families signed up for PTO membership will earn their class a **Free pancake & PJ Dress Day!**

WHEN YOUR
STUDENTS
CLASS HAS
10
MEMBERSHIPS



How to sign up?

1. Scan QR code or go to <https://my.cheddarup.com/c/mcneill-pto-2024-2025>
2. Choose membership
(Only 1 sign up need for family. Please include all children and their teachers on one sign up)

All sign ups must be completed by November 1, 2024 to qualify!

Let's join forces and support our school while making pancakes and PJs fun happen!

2025-26 Rezoning for Families of Current 5th-11th Grade Students

The Lamar CISD Board of Trustees approved new secondary campus zones for the 2025-2026 school year, and I am writing to inform you of some important changes that may affect your child's campus assignment starting in the 2025-2026 academic year if they are currently in grades 5 - 11. To determine if you and your family will be impacted by the rezoning, please follow the steps below.

- Go to the Lamar CISD website – www.lcisid.org
- At the top of the page, click on "Find My School"
- Using the dropdown arrow next to "School Year 2024-25", select "School Year 2025-26"
- Begin entering your home address in the search bar
- Once you see your address, click on that address
- On the left-hand side of the site, you will see the elementary, middle school, junior high school, and high school that your home is zoned for in Lamar CISD

Families who are impacted by the rezoning will be directly contacted to provide detailed information regarding these changes later this school year.

Should you have any immediate questions or concerns, please do not hesitate to contact the Department of Enrollment Management directly at 832-223-0424. You can also reach out to me if

you have any questions as well. Thank you for your continued support and understanding.

FALL BEANSTACK READING CHALLENGE

Library Services is excited to announce our their Fall Beanstack “The Great Escape” Reading Challenge! The challenge runs from September 1-October 31. Students will log into Classlink and click on the Beanstack app. They can earn up to 12 badges for their reading. Students who earn all 12 challenge badges by Oct. 31 will be entered into a district raffle. Prizes will be drawn at random.

We encourage all Merlins to participate!

ARE YOU READY?

THE GREAT ESCAPE
Beanstack Reading Challenge

Read! **Have Fun!** **Earn Badges!**

Log into Classlink and click on the Beanstack app. Start logging your minutes. Read just 30 minutes a day to earn a badge for every hour you read. Earn all 12 badges.

Challenge runs from
September 1st – October 31st.

Students who earn all 12 challenge badges by October 31st will be entered into a district raffle*.
*Prizes will be drawn at random.

ARE YOU UP FOR THE CHALLENGE?

LAHAR^{CISD}
Libraries



LCISD Beanstack Great Escape Kickoff Flyer EN and SP.pdf

[Download](#)
462.9 KB

RAINY DAY DISMISSAL PROCEDURES

On inclement weather days, we will implement our Rainy Day Dismissal procedures to ensure all students get home safely. All dismissal procedures will remain the same for car riders, bus riders, daycare, and YMCA students. Please note the changes below for walkers and bikers in the event of a Rainy Day Dismissal.

Walkers & Bikers

- Students will report to the library and sit by grade level.
- At 3:10 PM, parents of walkers/bikers may make their way to the front of the school and form two (2) lines.
- Parents will be asked to sign their child out with one of the staff members in the front foyer.
- Students will be released from the library to the parent after they have been signed out.

In the event you would like to change your child's transportation method, please contact the front office before 2:15 pm. Thank you in advance for your understanding as student safety is our top priority.

Report Cards

Report cards for the 1st 9 weeks will be available on Friday, October 18th. Please check your Skyward Family Access account to view this document.

If you need help with Family Access, please contact our secretary, Mindy Gonzalez at mgonzalez06@lcisd.org.



How to view progress reports and report cards in Family Access.pdf

Download
297.3 KB

MCNEILL

ELEMENTARY CLUBS

CHEER CLUB (3-5)-MS. GAINES
dawnyel.gaines@lcisd.org

CHOIR (4-5)-MS. GARNES

RHYTHM CLUB (1-3)-MS. GARNES
bailee.garnes@lcisd.org

MEDICAL DETECTIVES (3-5)-NURSE MAGER

NEHS (5)-MRS. PATTERSON-COBB

GIRLS ABOVE SOCIETY (5)-MRS. PATTERSON-COBB
francine.patterson@lcisd.org

INTRAMURAL SPORTS(3-5)-COACH YOUNG
jordan.young@lcisd.org

GIRLS IN STEM (5)-MRS. OBRERO
cynthia.obrero@lcisd.org

LEGO CLUB (1-2)-MS. KIRKPATRICK
megan.kirkpatrick@lcisd.org

MEN IN THE MAKING (5)-MR. JONES

CHECKERS (4-5)-MR. JONES
william.jones@lcisd.org

KARATE CLUB (3-5)-COACH K
madisyn.kornreich@lcisd.org

ACADEMIC CLUB-MR. YOON

MCA-MR. YOON
yoon.kim@lcisd.org

Please contact the club coordinator for further questions.

CLUB INFORMATION - OCTOBER

Our clubs are underway. It is important that parents pick up or drop off students on time. We appreciate your support! Below you will find a list of clubs, meeting dates, and sponsor name(s). Please reach out to the club sponsor with any questions.

Club Name

MCA - Monday

- October Date(s): 10/7, 10/21, 10/28
- Sponsor - Mr. Yoon

NEHS - Monday

- October Date(s): 10/7
- Sponsors - Ms. Patterson/Mr. Jones

Cheer - Tuesdays

- October Date(s): 10/1, 10/8, 10/15, 10/22, 10/29
- Sponsor - Ms. Gaines

Choir - Tuesdays

- October Date(s): 10/1, 10/8, 10/15, 10/22, 10/29
- Sponsor - Ms. Garnes

Medical Detectives - Tuesday

- October Date(s): 10/1, 10/8, 10/15, 10/22, 10/29

- Sponsor - Nurse Mager

Girls Above Society - Wednesday

- October Date(s): 10/9, 10/16, 10/23, 10/30
- Sponsor - Ms. Patterson-Cobb

Rhythm Club - Wednesday

- October Date(s): 10/9, 10/16, 10/23, 10/30
- Sponsor - Ms. Garnes

Academic Club - Thursday

- October Date(s): 10/10, 10/17, 10/24
- Sponsor - Mr. Yoon

Girls in STEM - Thursday

- October Date(s): 10/3, 10/10, 10/17, 10/24
- Sponsor - Ms. Obrero

Lego Club - Thursday

- October Date(s): 10/3, 10/10, 10/17, 10/24, 10/31
- Sponsor - Ms. Kirkpatrick

LUNCH VISITORS

Lunch visitors will be welcomed daily during. Lunchroom visitors are limited to **TWO visitors** per child per day.

As a large campus, our space is very limited, and we must be creative with how we safely accommodate lunch visitors for parents who would like to eat with their children. There will be one lunch table and the lounge area designated for visitors. Please be sure to sit in these areas only.

Visitors may eat **ONLY** with their child. Visitors may not provide food for children who are not their own or interact with them.

Visitors must sign in at the front office with a government issued identification card or a passport to receive a pass. After the scheduled lunch time, parents must leave the building.

Parents are highly discouraged from dropping off lunches or having lunch delivery services at school. The constant deliveries are a disruption to the instructional environment. Students should bring easy to open items with them daily for lunch and snacks to minimize contact. No nut-based snacks for the classrooms.



mcneill lunch schedule_parent.pdf

[Download](#)

88.5 KB

LIBRARY MATERIALS INFORMATION



Parent Letter for Library Information Access 24-25.pdf

Download
243.0 KB

NURSE'S CORNER

LETTER FROM THE NURSE

Clinic Hours
M-F
7:45 am-
3:45 pm

WELCOME to Mc Neill Elementary. My name is Tamara Mager, and I am the school nurse. In addition to school nursing, I have a background in many different areas of nursing from the cardiac cath lab to camp nursing. Through my many years of nursing, I have had many medical experiences which now allows me to best care for your child.

As the nurse, it is my job to support your child's health and learning this year. I have included some information on policies for our district. Please make sure to follow the policies put in place by the district to prevent the spread of illness in the school and to keep your child safe.

If you ever have a question, please feel free to reach out to me. My goal is to return your call or respond to your message within 24 hours of receipt. Together, we can keep our Merlins happy and healthy throughout the year.

SCHOOL

District Policy

Fever: Student has a fever > 100.0 F. Students must be fever-free for 24 hours without fever-reducing medicine before returning to school.

Vomiting: If a child vomits two or more times within 24 hours, they will need to stay home until they are 24 hours without vomiting.

Diarrhea- Students with any diarrhea illness must be excluded from school until they are diarrhea free for 24 hours without the use of diarrhea suppressing medication.

LCISD encourages all students to attend school every day unless prevented by severe injury, illness, or hospitalization. For the protection and well-being of all students, parents should keep students' home if they are severely ill, or are known to have (or suspected to have a contagious health condition.

tamara.mager@lcisd.org 832-223-2806 clinic 832-223-2801 fax



GIFTED AND TALENTED PARENT REFERRALS

DOES YOUR CHILD:

- learn quickly?
- ask lots of questions?
- demonstrate creativity?
- have a vivid imagination?
- solve problems in a unique manner?

LCISD REFERRAL
TESTING TAKES
PLACE DURING
THE SPRING
SEMESTER

TO REFER YOUR
CHILD FOR GT
EVALUATION,
SCAN OR CLICK.

If you have any questions, please
contact your campus GT Facilitator.



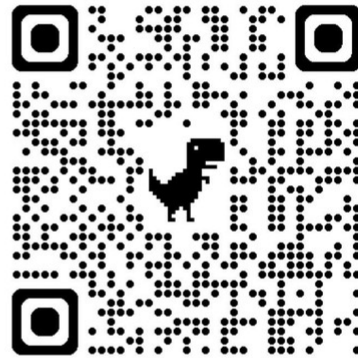
CLICK HERE



24-25 GT Parent Referral Flyer.pdf

Download
479.6 KB

VOLUNTEER LIST SIGN UP



**THIS IS NOT A
COMMITMENT; WE
WILL EMAIL YOU
CAMPUS VOLUNTEER
OPPORTUNITIES AS
THEY ARISE**

THANK YOU- MCNEILL PTO

PTO NEWS

JOIN McNeill Elementary PTO This Year!
 The McNeill Elementary PTO is the heart of our school community. Bringing together parents, teachers, staff, and students to create a positive and enriching environment. By becoming a member, you'll connect with other parents, support our school, and have a lot of fun along the way!



Why Join?
 For just \$10, your membership helps fund essential programs and resources, including social events, educational tools, and school supplies. Your contribution directly enhances our students' school experience.

Get Involved
 The PTO thrives on the support of parents like you. Your ideas, energy, and involvement are key to making this year a success. [Sign up for volunteer opportunities.](#)

How to Join
 Joining is easy—simply make your \$10 payment by check to "McNeill Elementary PTO" or cash. Turn donations in to your child's homeroom teacher. Donations may be tax-deductible.

Let's Make This Year Unforgettable!
 By working together, we can provide the best possible learning environment for our children. Join us today and help make the 2024-2025 school year the best one yet!

For more information, email us at membership.mcneill.pto@gmail.com or visit our [McNeill PTO Facebook page](#). QR code ->



Together, we can create a brighter future!

Membership is not limited to parents. Any family member or community member may join McNeill Elementary PTO.

Parents First Name, Last Name	Email	Phone

List all children attending McNeill Elementary. Use back if additional space is needed.

Childs First Name	Last Name	Grade	Teacher

Your signature completes the McNeill PTO membership application. Thank you for supporting your child and McNeill Elementary!

Signature:	Date:

For Accounting Purposes, Payment Rec'd as: Membership fee, Donation:	Cash, VENMO, or Check # \$	Initials



2024-2025 Membership PTO.pdf

Download
449.8 KB

October Dress Down Days

Our October dress down days will be held on the following date(s):

Friday, October 4 - "Pink Out" for Breast Cancer (Students Pay \$1)

Thursday, October 10 - End of 1st Nine Weeks (Free Dress Day)

PINK OUT FOR CANCER

\$1

Friday, October 4, 2024



**Students are encouraged to wear
pink to raise awareness.**

**Please send \$1 with your student or return
the Dress Down Prepay form to participate.**

*ALL CLOTHING MUST MEET LCISD STUDENT DRESS CODE POLICY

October Spirit Nights

Our October Spirit Nights will be held on the following dates:

October 16 - Spring Creek BBQ

October 23-24 - Half Baked Goodness

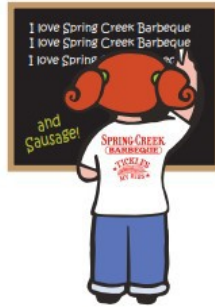
**SPRING CREEK
BARBEQUE**



Spirit Night

Join your classmates and their families

**MCNEILL ELEMENTARY 🐾 WEDNESDAY, OCTOBER 16
SPRING CREEK BBQ RICHMOND
5pm -9pm
7575 W GRAND PARKWAY S 🐾 832-400-2092**



- ★ Spring Creek will donate 20% of all the evening's proceeds to the PTO.
- ★ Students should sign in at the front door.
- ★ The class with the best attendance will be given a prize by Spring Creek.
- ★ Your school will have the opportunity to earn a bonus of \$200 by doing the following:
 - Post on the school marquee
 - Post on your Facebook/Instagram/Twitter pages. (We provide the post).

**Come see your teachers
serve hot, fresh bread
in the Spring Creek dining room!**



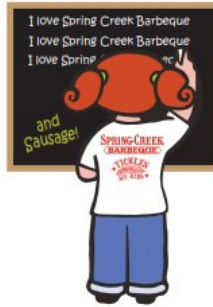
**SPRING CREEK
BARBEQUE**



Noche Especial

Únete con tus compañeros de clase y sus familias

**MCNEILL ELEMENTARY • EL MIÉRCOLES 16 DE OCTUBRE
SPRING CREEK BBQ RICHMOND
5pm -9pm
7575 W GRAND PARKWAY S • 832-400-2092**



- ★ Spring Creek donará 20% de la recaudación de esta noche al PTO.
- ★ Estudiantes deben firmar en la puerta principal.
- ★ La clase con la mejor asistencia recibirá un premio de parte de Spring Creek.
- ★ Tu escuela tendrá la oportunidad de ganar un bono de \$200 al hacer siguientes requisitos:
 - Publicar en el letrero de la escuela
 - Publica en tus páginas de Facebook/Instagram/Twitter (proporcionamos la publicación)

**Ven a ver cómo tus profesores
sirven pan caliente y fresco
en el comedor de Spring Creek!**





2004 S. MASON RD, SUITE D2, KATY

**MCNEILL ELEMENTARY PTO
SPIRIT NIGHT
OCTOBER 23-24, 2024**

SUPPORT MCNEILL ELEMENTARY PTO WITH
DELICIOUS GOOEY COOKIES!

USE CODE "[MNE24](#)" AT OUR KATY STORE OR
ONLINE AND 20% OF ALL PROCEEDS WILL GO
TO MCNEILL ELEMENTARY PTO.

**THE CLASS THAT BUYS THE MOST COOKIES WINS
A COOKIE PARTY!**



ORDER FOR DELIVERY



FOLLOW US



COUNSELOR'S CORNER

COUNSELOR'S CORNER



Respect

October is National Bullying Prevention Month

Our goal is to encourage schools, communities and organizations to work together to celebrate kindness, diversity and inclusivity. As a NPFH (No Place For Hate) activity, I encourage you to read the book, *All Are Welcome* by Alexandra Penfold. Students will be given a person cutout or template to take home so parents and students can work together to talk about their families culture, customs, and traditions and decorate their person cutout. Once complete, students will return cutout to their teacher so we can display the entire school's population to show that we are all different and ALL ARE WELCOME at McNeill Elementary.

Character Building at Home—What can parents do?

- Use the Character Counts Six Pillar words; Trustworthiness, Respect, Responsibility, Fairness, Caring, Citizenship and connect with your child's behavior. For example, "I'm proud of you getting up everyday this week on time, that was very responsible of you."
- Point out good character when you see it.
- Encourage your child to go out of their way to include a friend in a group.
- Model good manners; say "please" and "thank you"
- Embrace diversity by respecting social customs of others.
- Acknowledge or identify how someone else feels.
- Practice and set expectations for your child to accept "no" from an adult without arguing.

Important Dates:

- Oct 10- End of 1st 9 weeks
- Oct 11&14 - No School
- Oct 20—25—Character Counts Week, recognize students exhibiting great character on morning announcements
- Oct 23- Books Alive
- Oct 24- Spelling Bee
- Oct 25—Early Release @ 11:45
- Oct 26- 31—Red Ribbon Week (see attached themed days)
- October 31- Book Character Dress Up Day

Francine Patterson-Cobb

832-223-2805

fpatterson@lcisd.org

MORNING BACK PARKING LOT DROP-OFF PROCEDURES

1. The back-parking lot is located at the rear of the building and is available for morning drop-off and afternoon pick-up.
2. Stay in the car line and follow staff directions.
3. Have your child exit the vehicle using only the front or back passenger side.
4. *If your child uses a car seat, please position it on the passenger side of the car.
5. Safety Patrol children assist with opening and closing the car doors of any child who needs assistance. Parents may not exit the car at any time to help their child leave the vehicle.
6. **Parents are not permitted to** park and walk their children to the building. A staff member will ask that you return to your vehicle and enter the car line to drop off your child.
7. **Please be patient and drive slowly.**

Dismissal

Transportation changes-Transportation changes **MUST** be made before 2:15 pm. Please call the office or send a note with your child to indicate a change for the way your child normally goes home. These are delivered to the classrooms at 2:15 pm. Therefore, we cannot accept changes

after 2:15 pm. If you want to check your child out early for appointments, that must be done by 2:15 pm. as well. We will not release students for early pick up after 2:15 pm. This information is in the LCISD Student Handbook. Please try and keep the way your child goes home as consistent as possible. This decreases the likelihood of a mistake occurring.

Bus-LCISD Transportation is highly recommended for all students who are eligible. The buses are the first mode of transportation to leave each day. The buses will load and leave early the first 3 days of school. Parents are advised to arrive at the bus stops early on these days. Give your child's bus a 15-minute window before and after the published time as drivers work to ensure everyone is accounted for and dropped off at the correct stop. PK and K students will only be released to an authorized adult listed in the My Stop App. Please bring your ID to the bus stop on the first day for verification. ID badges will be scanned each time your child gets on and off the bus, for lunch meals in the cafeteria, and in the library for checking out books.

Daycare- Daycare vans will line up behind LCISD Transportation. Students will be loaded in the daycare vans after the school buses have been loaded and have left. Please let your child's teacher know the name of the daycare your child will attend as well as the branch if it is a chain daycare, i.e. Kids R Kids Bella Terra.

Car-We anticipate a large number of car riders this year, so we are asking you to please be patient while we dismiss students safely. Please place your **ORANGE** car rider tag on the passenger side dashboard, so that the person calling the names of the car riders can see it. The drop-off/pick-up line is at the back of the school right passed the playground.

Walkers/Bikers – They will be dismissed by grade level. PK/K students will be released to a parent/guardian only. Parents are not allowed to walk up to the school to meet your children. Please meet them at the edge of the front parking lot entry (for those who live in the direction of the park) and all others at the 4- way stop (Mason and Lakemont Bend). Please do not park your car in the street and wave for your child to run across traffic. This is very dangerous. If your child is a walker, you are saying that they are responsible enough to get home on their own without adult assistance. **If you do not want your child to walk home without an adult, please make sure to communicate that with the teacher prior to the first day of school. If they have older/younger siblings that they will walk home with, please communicate that information to the teachers as well.**

We know it might take a few days to develop a routine that works for your family. **It is very important that students' transportation is consistently set as soon as possible.**

AFTERNOON BACK PARKING LOT PICK-UP PROCEDURES

To ensure the safety of our students, we ask that you please follow the procedures listed below to help the car rider line remain safe and move quickly.

1. The car rider line is a **CELL PHONE FREE ZONE**.
2. **Dismissal will begin promptly at 3:10.**
3. Parents will place ORANGE car rider signs on the passenger side dashboard.

4. A teacher will assign you a number as you enter the car rider line.
5. You will pull forward to your designated number indicated on the polls to your right.
6. Do not stop when you see your child walking. A staff member will assist your child with entering the car.
7. **Please do not get out of your vehicle for any reason.**
8. Once your child is in your vehicle, you must remain in the car rider line. **Do not go around the cars in front of you to exit the car line.**
9. **If your child is not at the designated number provided, you will be asked to move forward and park in a designated parking spot. A staff member will go to the gym and walk your child to your vehicle.**
10. Please be patient and drive slowly.



EARLY PICK UP AND TRANSPORTATION CHANGES

If you take your child out of school before dismissal time, you will need to report to the office to sign him/her out. Your child will stay in the classroom until you arrive. If it necessary for someone other than the parent/guardian pick up your child, that person must be signed, dated note with the child. The person picking up your child must show photo identification to the office staff. Accumulated time of early pick-ups is calculated by minutes in lost instruction time. Request to check out your child must be done prior to 2:15 pm.

Any changes in the normal transportation of your child must be stated in writing with a parent/guardian signature. We ask for everyone's help in not making changes frequently. However, we understand that in rare cases, unexpected changes will need to happen. These can be called in to the front office by 2:15 pm. **We are not able to process changes after 2:15 pm.** This includes parents that come to the campus without prior notice to pick up their child. Any change in transportation arrangements for any student requires a note to the teacher. Make sure you write your child's first and last name, teacher's name and indicate the date(s) for the change and how the child is going to go home. We ask that the parents not email the change since there maybe times that a teacher is not in attendance or does not have a chance to read their email.

Please note on early release days the latest you can pick up is 11:00 am!

THE GOLD STANDARD

ELECTRONIC DEVICE POLICY

Cell phones, smart phones, smart watches, iPads, earbuds, and tablets **MUST** be turned off and in backpacks for the duration of the instructional day

- 1st Offense - Parent contact, phone confiscated and returned at the end of the day
- 2nd Offense - Parent contact, phone confiscated, and parent must retrieve phone with a \$15 fee
- 3rd Offense - Parent contact, phone confiscated, and parent must retrieve phone with a \$15 fee, and student is assigned ISS
- 4th Offense - Parent contact, phone confiscated, and parent must retrieve phone with a \$15 fee, and student is suspended
- 5th Offense - Parent contact, phone confiscated, and parent must retrieve phone with a \$15 fee, and student is recommended to attend ALC
- 6th Offense and beyond - Recommended ALC Placement



SRP: STANDARD RESPONSE PROTOCOL

IN AN EMERGENCY TAKE ACTION



HOLD! In your room or area. Clear the halls.

STUDENTS

Clear the hallways and remain in room or area until the "All Clear" is announced
Do business as usual

ADULTS

Close and lock door
Account for students and adults
Do business as usual



SECURE! Get inside. Lock outside doors.

STUDENTS

Return to inside of building
Do business as usual

ADULTS

Bring everyone indoors
Lock outside doors
Increase situational awareness
Account for students and adults
Do business as usual



LOCKDOWN! Locks, lights, out of sight.

STUDENTS

Move away from sight
Maintain silence
Do not open the door

ADULTS

Recover students from hallway if possible
Lock the classroom door
Turn out the lights
Move away from sight
Maintain silence
Do not open the door
Prepare to evade or defend



EVACUATE! (A location may be specified)

STUDENTS

Leave stuff behind if required to
If possible, bring your phone
Follow instructions

ADULTS

Lead students to Evacuation location
Account for students and adults
Notify if missing, extra or injured students or adults



SHELTER! Hazard and safety strategy.

STUDENTS

Use appropriate safety strategy for the hazard

ADULTS

Lead safety strategy
Account for students and adults
Notify if missing, extra or injured students or adults

Hazard	Safety Strategy
Tornado	Evacuate to shelter area
Hazmat	Seal the room
Earthquake	Drop, cover and hold
Tsunami	Get to high ground

© Copyright 2018-2021 All Rights Reserved. The "Open School" logo and "Open School" are trademarks of the "Open School" Foundation and may be registered in certain countries. The "Open School" logo and "Open School" are trademarks of the "Open School" Foundation and may be registered in certain countries.



EMERGENCY DRILL PRACTICES

Every month McNeill students will practice a safety drill along with a fire drill. Drills are not announced so we can practice them in case we are presented with a situation to activate one in real time. Teachers reviewed the procedures for these drills with their students during the first week of school. These drills have **not** changed from last year to this year.

MCNEILL STUDENTS EAT FREE BREAKFAST & LUNCH

McNeill Elementary was added as a CEP campus during the 2023-24 school year. Due to this all McNeill students will eat free breakfast and lunch. Students will still be required to pay for A la Carte (snack) items sold by the cafeteria. For more information please see the flyer below or visit the Child Nutrition website.



2024-2025-important-notice-english.pdf

Download
124.3 KB



Student ID Reminders

- Student IDs will be distributed for the 2024-25 school year.
- New enrollees will have their ID picture taken and cards made on day enrollment.
- Students will be required to wear their student IDs daily. They should wear them with their lanyards to school. No items should be attached to lanyards.
- Any student who misplaces their student ID will need to purchase a replacement one. Replacement ID tags can be purchased for \$5 in the front office.



2024-25 McNeill's Standard Dress Code

Parents,

Please help to ensure that your child is in dress code everyday. Outside of dress down days, students are expected to adhere to our campus dress code. Thank you in advance for your help.

Collared (polo style, no logo) solid color tops in red, white, navy blue and yellow. Bottoms may be in solid color khaki, navy blue or blue denim jeans, slacks shorts, skirts, or jumpers. McNeill spirit shirts may also be worn.

Clarifications:

- Students are required to wear their ID's daily.
 - On PTO Free and Pay dress down days students must follow the LCISD dress code policy.
-

Visitor/Volunteers

Visitors-All visitors will need to sign in at the front office with a state issued ID. Visitors must wear their raptor name badge and report to the area that is indicated on their badge. For the safety of all school community members, visitors should enter/exit through the front area of the building only.

Volunteers- We will have volunteers through the building during the school day. We will communicate with the PTO and community when we will begin allowing workroom volunteers to come on campus. That volunteer time will be coordinated by the PTO. Those volunteers will only be allowed to work in the workroom. They will not be allowed in any other area of the building. Each person will have to be cleared through a background check with LCISD in order to volunteer in the workroom.

Snacks

Students are allowed to bring a snack to school daily if they choose. Please keep in mind that snacks need to be a healthy choice. Please do not send chips, candy, or anything that requires a utensil. A healthy snack will give your child the nutritional boost he/she needs during the day. Please keep in mind that snack time will be 10-15 minutes long. Students should be able to continue working in class while consuming their snack. Do not send in anything that needs to be refrigerated. Below is a list of good snacks to consider. **DO NOT SEND ANYTHING WITH PEANUTS OR PEANUT BUTTER.**

Students will be allowed to get drinks from the water fountain.

If you choose to send in a drink, please **Do Not** send in any glass bottles, soda or sport drinks.

Please note that if students bring an unapproved snack, they will lose the privilege of having snack.

- | | | |
|-------------|-------------------|-----------------------|
| ★ Pretzels | ★ Animal crackers | ★ Goldfish crackers |
| ★ Muffins | ★ Crackers | ★ Granola/cereal bars |
| ★ Apples | ★ Carrot sticks | ★ Graham Crackers |
| ★ Pop tarts | ★ Banana | ★ Cereal |
-

Yearbook Information

Yearbook News

August-October 2024

Back to school yearbook sale! For a limited time only!

3 EASY WAYS TO ORDER:

1. Order online at www.jostens.com/buyyearbk
2. Make a payment using VENMO to [@McNeill-PTO](https://www.venmo.com/@McNeill-PTO)
3. Send cash or check to the front office, checks made payable to: [McNeill Elementary PTO](#)

Order today for just \$30
Sale ends Friday 10/25/24



SCAN ME

Share your photos!

Go to <https://photos.jostens.com/3ZYFVG> or scan the QR code below



Yearbooks available for \$5

2018-2019
2019-2020



For questions or concerns, please contact
Delores Williams at merlinyearbook@gmail.com

**2025
Yearbook
\$30**



**Back to school Yearbook sale!
3 easy ways to order yours today!**

1. Go to JOSTENS.COM/BUYYEARBK type in our school name HF McNeill Elementary School
2. Make a Venmo payment to McNeill Elementary PTO [@McNeill-PTO](https://www.venmo.com/@McNeill-PTO)
3. Complete the form below in a marked envelope "Yearbook" with your cash or check made payable to: [McNeill Elementary PTO](#)

For questions or concerns, please email
Delores Williams at merlinyearbook@gmail.com



While supplies last. Scan now to preorder. Sale ends Fri. 10/25/24

Cost: \$30

Student Name : _____

Teacher/Grade : _____

Parent/Guardian Name: _____

Email: _____

Phone : _____

of Yearbooks _____ Total Cost _____
Payment Method _____ Cash _____ Check _____ Venmo
(check one)

HELPFUL DOCUMENTS



2024-2025-student-instructional-calendar.pdf

[Download](#)
188.3 KB



2024-25-school-supply-list.pdf

[Download](#)
163.0 KB

Dates to Remember

OCTOBER

- October 1: 3rd Grade Fieldtrip/Choir Practice/Medical Detectives/Cheer
- October 2: 3rd Grade Fieldtrip/Custodian Appreciation Day
- October 3: Lego Club/Girls in STEM

- October 4: Pre-K Fieldtrip/PTO Dress Down Day (Pink Out - Students Pay \$1)
 - October 7: MCA/NEHS Meeting
 - October 8: Choir Practice/Medical Detectives/Cheer
 - October 9: Rhythm Club/Girls Above Society
 - October 10: 1st Nine Weeks Ends/PTO Free Dress Day/Academic Club/Lego Club/Girls in STEM
 - October 11: Fall Holiday (No School)
 - October 14: Fall Holiday (No School)
 - October 15: 2nd Nine Weeks Begins/ PTO Fundraiser Kick-Off/Choir Practice/Medical Detectives/Cheer
 - October 16: PTO Spirit Night @ Spring Creek BBQ/Rhythm Club/Girls Above Society
 - October 17: Academic Club/Lego Club/Girls in STEM
 - October 18: Report Cards Posted in Skyward/Fall Ball (6-8 PM)
 - October 21-25: Character Counts Week
 - October 21: Wear Red for Caring/MCA
 - October 22: Wear Blue for Trustworthiness or Yellow for Respect/Choir Practice/Medical Detectives/Cheer
 - October 23: Wear Green for Responsibility/Rhythm Club/Girls Above Society/PTO Spirit Night @ Half Baked Goodness
 - October 24: Spelling Bee/Kindergarten Fieldtrip/Wear Purple for Citizenship/Academic Club/Lego Club/Girls in STEM/PTO Spirit Night @ Half Baked Goodness
 - October 25: Early Release @ 11:45AM/Wear your Assigned Grade Level Color
 - October 28-November 1: Red Ribbon Week
 - October 28: Wear Red/MCA
 - October 29: Wear a Hawaiian Shirt and/or Lei/Choir Practice/Medical Detectives/Cheer
 - October 30: Wear Your Pajamas/Rhythm Club/Girls Above Society
 - October 31: Book Character Dress Up/Lego Club
-



OCTOBER 2024



SUNDAY	MONDAY	TUESDAY	WEDNESDAY	THURSDAY	FRIDAY	SATURDAY
<p>BREAST CANCER AWARENESS MONTH PRINCIPAL APPRECIATION MONTH BULLY PREVENTION MONTH CUSTODIAL APPRECIATION WEEK</p>		<p>1 3RD GRADE FIELDTRIP LONG ACRES RANCH CHOIR PRACTICE (7-7:45 AM) MEDICAL DETECTIVES (3:15-4:15 PM) CHEER PRACTICE (3:45-4:45 PM)</p>	<p>2 CUSTODIAN APPRECIATION DAY 3RD GRADE FIELDTRIP LONG ACRES RANCH</p>	<p>3 LEGO CLUB (3:15-4 PM) GIRLS IN STEM (3:30-4:30PM)</p>	<p>4 P.T.O. DRESS DOWN DAY PINK OUT STUDENTS PAY \$1 PRE-K FIELDTRIP DEMBERRY FARMS</p>	<p>5 WORLD TEACHERS DAY</p>
<p>6 FIRE PREVENTION WEEK WORLD COACHES DAY</p>	<p>7 NEHS MEETING (3:15-4:00 PM) MCA</p>	<p>8 CHOIR PRACTICE (7-7:45 AM) MEDICAL DETECTIVES (3:15-4:15 PM) CHEER PRACTICE (3:45-4:45 PM)</p>	<p>9 RHYTHM CLUB (3:15-4 PM) GIRLS ABOVE SOCIETY (3:15-4 PM)</p>	<p>10 1ST 9 WEEKS ENDS P.T.O. FREE DRESS DAY LEGO CLUB (3:15-4 PM) GIRLS IN STEM (3:45-4:35PM) ACADEMIC CLUB</p>	<p>11 NO School Today FALL BREAK NO SCHOOL (STAFF & STUDENTS)</p>	<p>12</p>
<p>13 SCHOOL LUNCH WEEK</p>	<p>14 NO School Today FALL BREAK NO SCHOOL (STAFF & STUDENTS)</p>	<p>15 2ND 9 WEEKS BEGINS HISPANIC HERITAGE MONTH ENDS PTO FUNDRAISER KICK OFF WORLD'S FINEST CHOCOLATE CHOIR PRACTICE (7-7:45 AM) MEDICAL DETECTIVES (3:15-4:15 PM) CHEER PRACTICE (3:45-4:45 PM)</p>	<p>16 NATIONAL BOSS'S DAY RHYTHM CLUB (3:15-4 PM) GIRLS ABOVE SOCIETY (3:15-4 PM) PTO SPIRIT NIGHT (SPRING CREEK)</p>	<p>17 LEGO CLUB (3:15-4 PM) GIRLS IN STEM (3:30-4:30PM) ACADEMIC CLUB</p>	<p>18 REPORT CARDS POSTED IN SKYWARD SPIRIT WEAR FALL BALL 6 PM - 8 PM</p>	<p>19</p>
<p>20 SCHOOL BUS SAFETY WEEK SAFE SCHOOLS WEEK CHARACTER COUNTS WEEK</p>	<p>21 WEAR RED FOR CARING MCA</p>	<p>22 WEAR BLUE FOR TRUSTWORTHINESS OR YELLOW FOR RESPECT CHOIR PRACTICE (7-7:45 AM) MEDICAL DETECTIVES (3:15-4:15 PM) CHEER PRACTICE (3:45-4:45 PM)</p>	<p>23 WEAR GREEN FOR RESPONSIBILITY RHYTHM CLUB (3:15-4 PM) GIRLS ABOVE SOCIETY (3:15-4 PM) PTO SPIRIT NIGHT (HALF BAKED GOODNESS)</p>	<p>24 SPELLING BEE WEAR PURPLE FOR CITIZENSHIP KINDER FIELDTRIP GEORGE OIL RANCH GIRLS IN STEM (3:45-4:35PM) LEGO CLUB (3:15-4 PM) ACADEMIC CLUB PTO SPIRIT NIGHT (HALF BAKED GOODNESS)</p>	<p>25 SPIRIT WEAR WEAR GRADE LEVEL ASSIGNED COLOR EARLY RELEASE [A] 11:45 AM</p>	<p>26 PK/K - WEAR BLUE 1ST - WEAR YELLOW 2ND - WEAR GREEN 3RD - WEAR ORANGE 4TH - WEAR RED 5TH - WEAR PURPLE</p>
<p>27 RED RIBBON WEEK 10/28-11/1</p>	<p>28 RED OUT WEAR RED TO SHOW YOUR PLEDGE TO BE DRUG FREE MCA</p>	<p>29 PTO FUNDRAISER ENDS WORLD'S FINEST CHOCOLATE LEI OFF DRUGS WEAR A HAWAIIAN SHIRT AND/OR LEI CHOIR PRACTICE (7-7:45 AM) MEDICAL DETECTIVES (3:15-4:15 PM) CHEER PRACTICE (3:45-4:45 PM)</p>	<p>30 FOLLOW YOUR DREAMS, NOT DRUGS WEAR YOUR PAJAMAS RHYTHM CLUB (3:15-4 PM) GIRLS ABOVE SOCIETY (3:15-4 PM)</p>	<p>31 HALLOWEEN BOOK CHARACTER DRESS UP DAY LEGO CLUB (3:15-4 PM)</p>		

McNeill Elementary

Email: jearine.jordan@lcisd.org

Website: <https://www.lcisd.org/campuses/mcneill/home>

Location: 7300 S. Mason Rd., Richmond, TX 77407

Phone: (832) 223-2800

Facebook: <https://www.facebook.com/McNeillMerlins>



Jearine Jordan

Jearine is using Smore to create beautiful newsletters